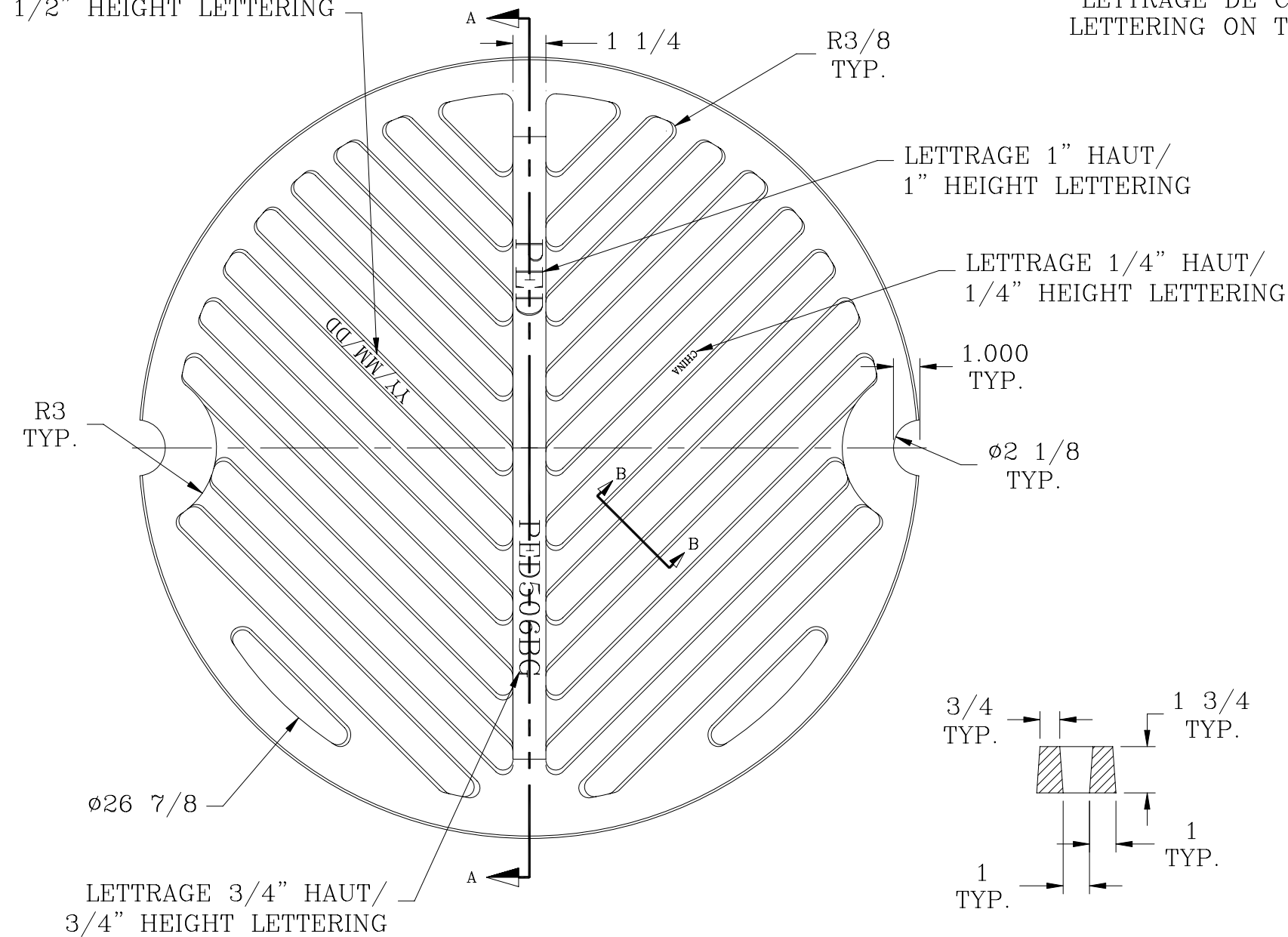
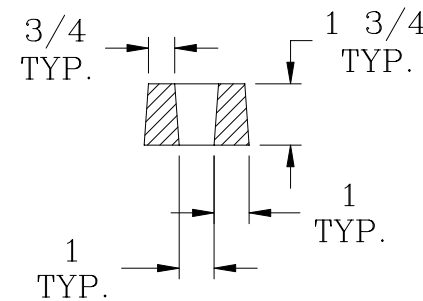
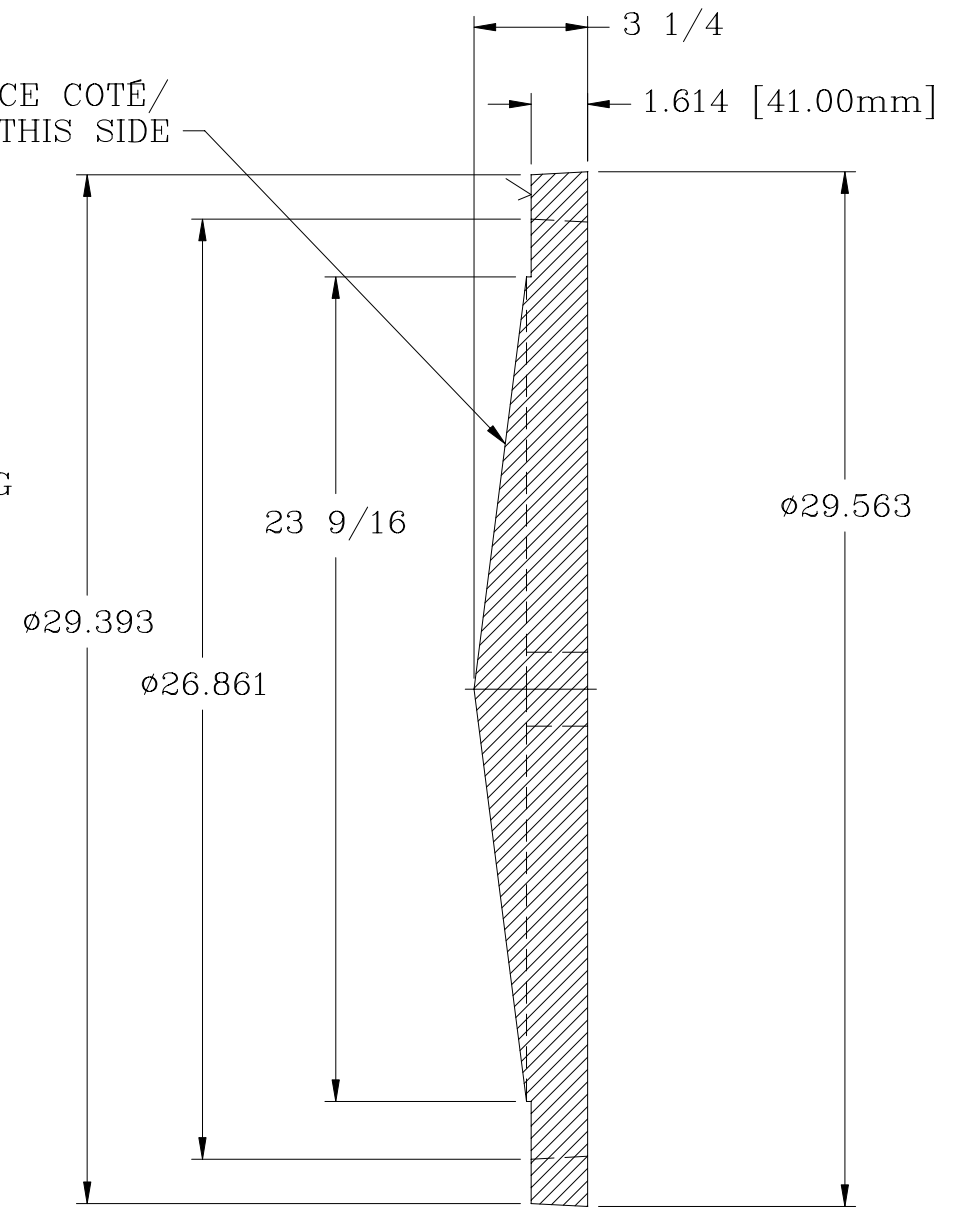


LETTREGE 1/2" HAUT/  
1/2" HEIGHT LETTERING



LETTREGE DE CE COTÉ/  
LETTERING ON THIS SIDE



SECTION A-A

SECTION B-B

**NOTE:**

- 1) PEINTURÉ NOIR / BLACK PAINTED
- 2) REMPLACÉ LETTRAGE YY/MM/DD PAR LA DATE DE PRODUCTION/ REPLACE LETTERING YY/MM/DD BY THE PRODUCTION DATE (YEAR/MONTH/DAY)

TOL. NON SPÉCIFIÉE/  
UNLESS SPECIFIED TOL.

.X OU/OR X/X = ±1/8  
.XX = ±0.063  
.XXX = ±0.031  
ANG. = ±0.5

ENLEVER ARRÊTES VIVES/REMOVE SHARP EDGES  
GORGE, ALÉSAGE,  
ALÉSAGE CONIQUE/  
GROOVE, BORE, TAPER BORE ✓

UNITÉES/  
UNITS  
POUCE/INCH

ÉTAT DE SURFACE/250/  
SURFACE ROUGHNESS ✓

No. PIECE/PART No. 610-2370	
CLIENT/CUSTOMER POLY-EXPERT DISTRIBUTION	
DESSINÉ PAR/DRAW BY J-P. LEFEBVRE	DATE 2003/03/13
VÉRIFIÉ PAR/CHEKED BY	DATE
MATÉRIAU/MATERIAL FONTE GRISSE CLASSE 30/ CLASS 30 GREY CASTIRON	POIDS/WEIGHT 190 Lbs
ECHELLE/SCALE ---	
No. DESSIN/DRAWING No. PED506BG	REVISION ---